



Consultancy Services for Preparation of Feasibility Study and Detailed Project Report for 2 lane with Paved Shoulder of newly declared NH-208 (length 157.70 Km) for execution on EPC Mode in the State of Tripura under NH (O)

FINAL DETAILED PROJECT REPORT

PLAN & PROFILE

Package IV

(Chainage :- 63.700km to 75.700km)



Submitted To



**Public Works Department,
Government of Tripura**

CETEST
Engineering Consultants

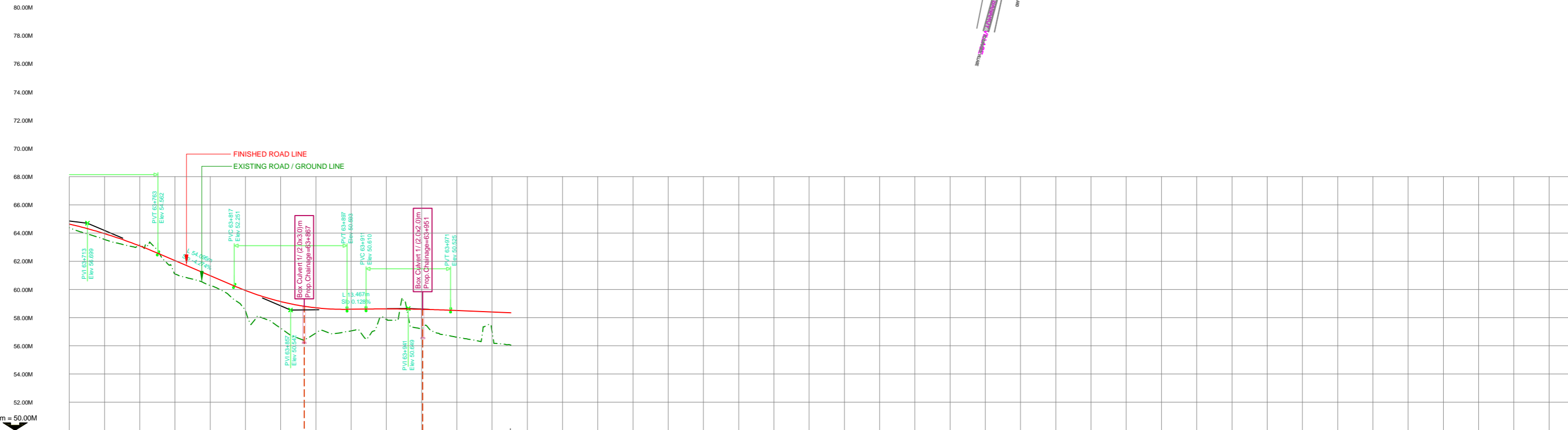
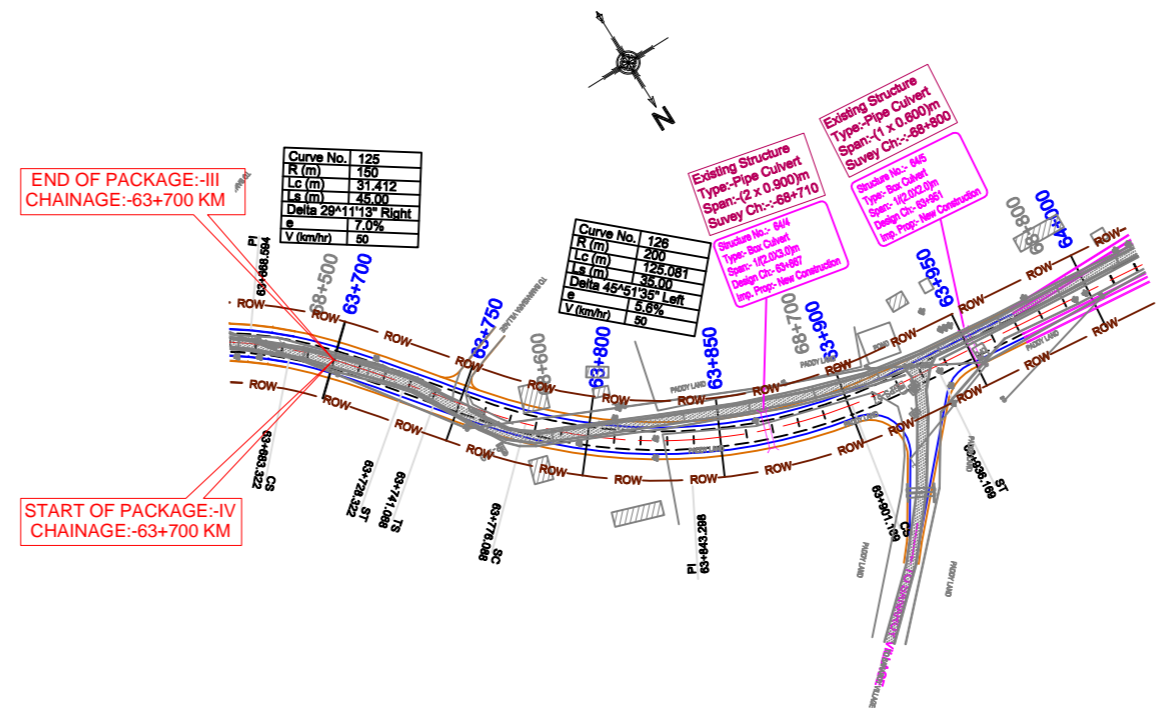
Prepared By

CE Testing Co. Pvt. Ltd.

124-A, N.S.C. Bose Road
Kolkata – 700 092, West Bengal

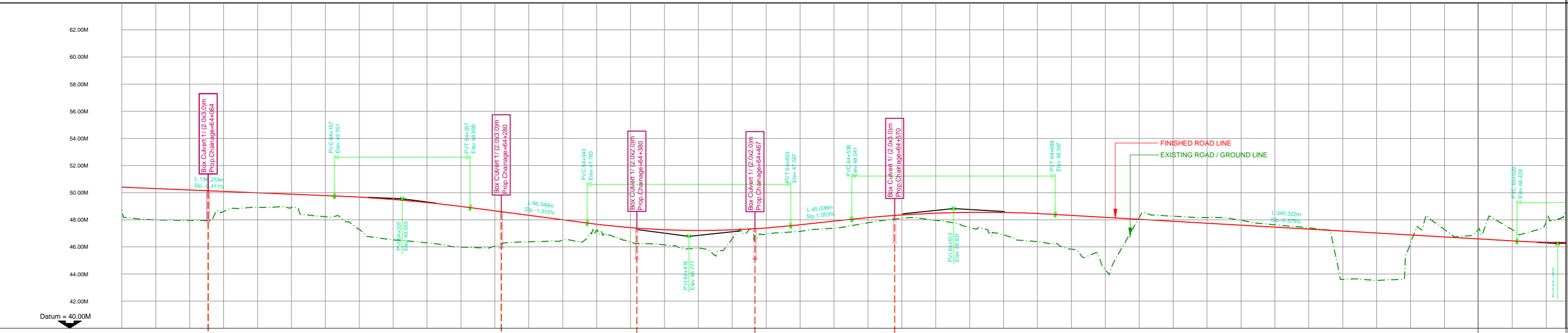
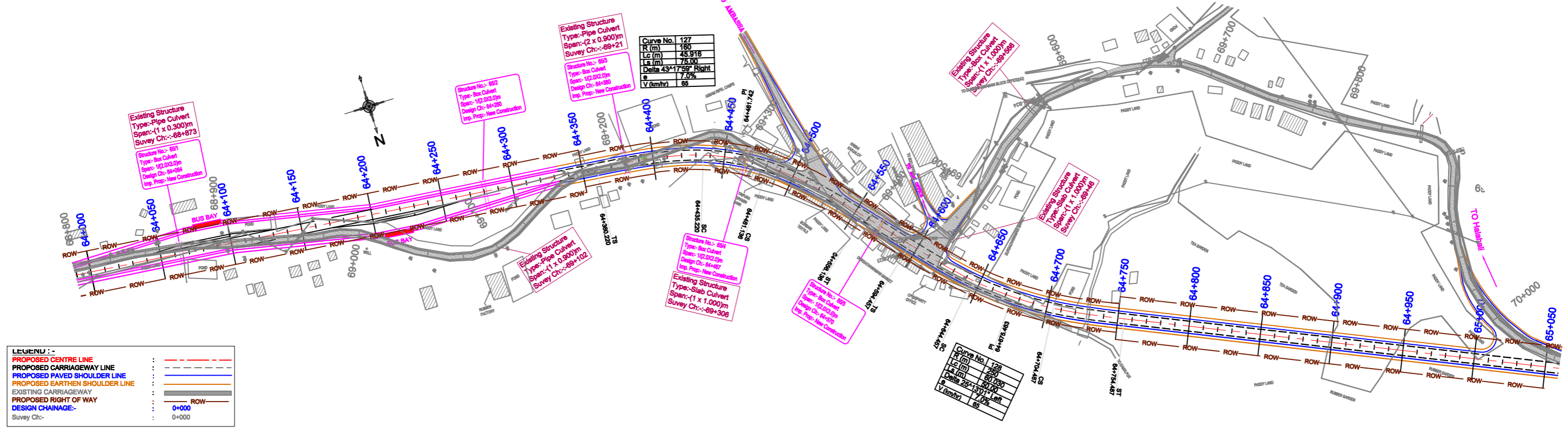
PLAN & PROFILE

PROPOSED CENTRE LINE	---
PROPOSED CARRIAGEWAY LINE	---
PROPOSED PAVED SHOULDER LINE	---
PROPOSED EARTHEN SHOULDER LINE	---
EXISTING CARRIAGEWAY	---
PROPOSED RIGHT OF WAY	---
DESIGN CHAINAGE	0+000
Survey Ch.	0+000



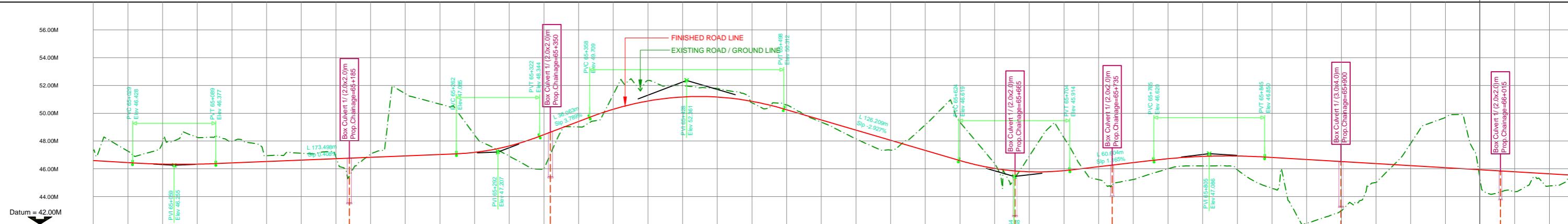
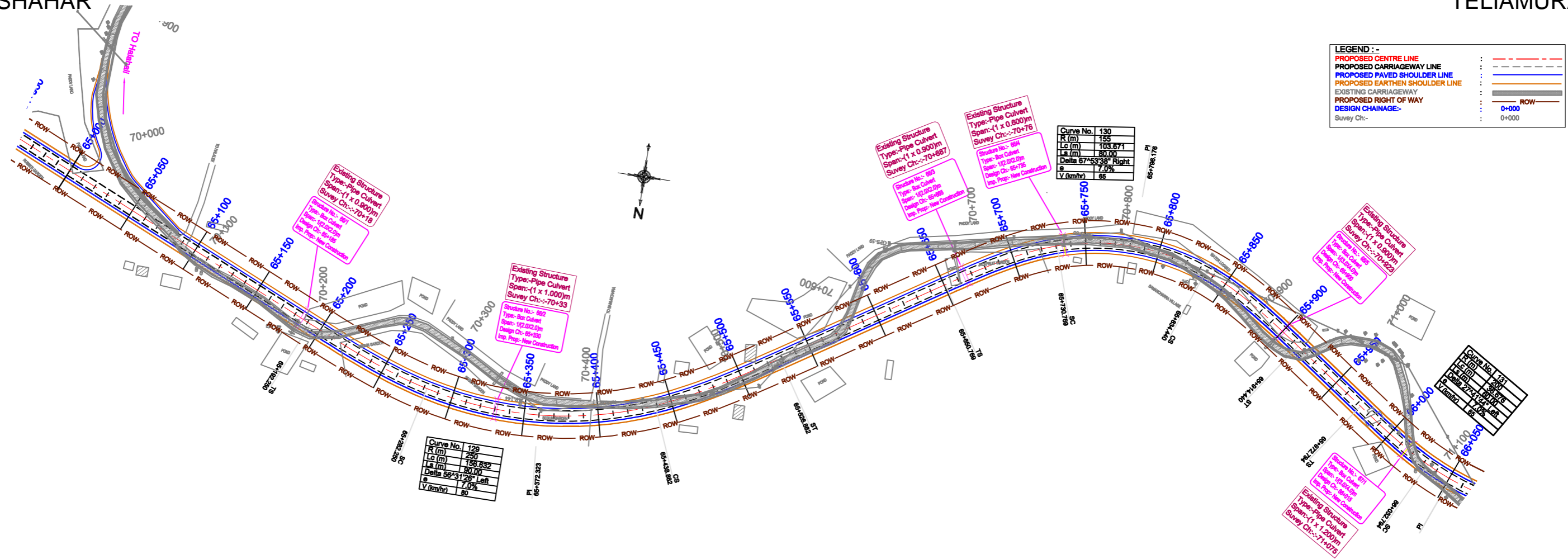
FINISHED ROAD LEVEL ALONG THE PROPOSED CL.	56.647	55.971	55.102	54.060	52.992	51.939	51.148	50.701	50.596	50.619	50.591	50.508	50.405
EXISTING GROUND LEVEL ALONG THE PROPOSED CL.	56.387	55.661	55.146	53.110	52.276	50.552	49.261	48.892	49.060	49.888	49.220	48.621	49.117
HORIZONTAL ALIGNMENT	L 45.00 A 82.16		L 35.00 A 63.67		L 125.08 R 200.00				L 35.00 A 63.67				
VERTICAL ALIGNMENT	L100.000 L1 50.000 L2 50.000		L54.046 SP=4.274%		L80.000 L1 40.000 L2 40.000		L13.980 SP=1.785%		L60.000 L1 30.000 L2 30.000				
SUPERELEVATION (e %)	[Graph showing super-elevation percentages across the chainage]												
CHAINAGE (KM)	63+700	63+725	63+750	63+775	63+800	63+825	63+850	63+875	63+900	63+925	63+950	63+975	64+000

SCALE: HOR - 1:2000 VER - 1:200		CLIENT: Public Works Department Government of Tripura		National Highways & Infrastructure Development Corporation Ltd.		PLAN & PROFILE Km 63+700 to Km 64+000		CONSULTANT : CETEST CE TESTING COMPANY PVT. LTD. Engineering Consultants 124-A, N.S.C. Bose Road Kolkata - 700092.		Dwg. No. CET/2015/3580/NH-208/FDPR/PP		
DATE: JUNE ,2017		PROJECT: Consultancy Services for Preparation of Feasibility Study and DPR for Improvement and Widening to Two Lane with 1.5m Paved Shoulder of Newly Declared NH-208 (Length 157.70 Km) for Execution on EPC Mode in the State of Tripura under NH(O)		ROAD NAME: Kailashahar to Teliamura Section of NH-208		Package:-IV (Km 63+700 to Km 75+700)		Revision Mkd. - R0		Sheet No. - 01 of 13		
MKD.	DATE	DESCRIPTION	CHKD.	APPRD.	Drawn By.	Design By.	Checked By.	Approved By.	M.Acharya	S.Dey	S.Sadhu	B.Koner
REVISIONS												



FINISHED ROAD LEVEL ALONG THE PROPOSED CL	EXISTING GROUND LEVEL ALONG THE PROPOSED CL	HORIZONTAL ALIGNMENT	VERTICAL ALIGNMENT	SUPERELEVATION (e %)	CHAINAGE (KM)
50.405	49.117		L 186.252 Slp -0.411%		64+000
50.303	47.998				64+025
50.200	47.965				64+050
50.098	48.598				64+075
49.995	48.918				64+100
49.892	48.932				64+125
49.790	48.225		L 100.000 L1 50.000 L2 50.000		64+150
49.672	47.295				64+175
49.501	46.530				64+200
49.273	46.308				64+225
48.988	45.881				64+250
48.682	46.055		L 86.342 Slp -1.315%		64+275
48.333	46.380				64+300
48.004	46.481				64+325
47.679	47.186				64+350
47.246	46.371				64+375
47.271	46.154				64+400
47.216	45.906		L 150.000 L1 75.000 L2 75.000		64+425
47.258	46.559				64+450
47.400	46.943				64+475
47.637	47.141		L 45.82 R 160.00		64+500
47.900	47.377				64+525
48.156	47.773				64+550
48.354	48.107				64+575
48.484	47.971				64+600
48.545	47.453		L 50.00 A 111.80		64+625
48.539	46.904				64+650
48.465	46.389				64+675
48.330	45.843		L 60.03 R 250.00		64+700
48.186	44.359				64+725
48.041	48.122				64+750
47.896	48.267				64+775
47.752	48.165				64+800
47.607	47.967				64+825
47.462	47.631				64+850
47.318	47.404				64+875
47.173	43.610				64+900
47.028	43.533				64+925
46.884	46.204				64+950
46.739	47.301				64+975
46.594	47.259				65+000
46.450	47.288				65+025
46.342	47.742		L 340.317 Slp -0.579%		65+050

SCALE: HOR - 1:2000 VER - 1:200		CLIENT: Public Works Department Government of Tripura		National Highways & Infrastructure Development Corporation Ltd.		PLAN & PROFILE Km 64+000 to Km 65+000		CONSULTANT : CETEST CE TESTING COMPANY PVT. LTD. Engineering Consultants 124-A, N.S.C. Bose Road Kolkata - 700092.		Dwg. No. CET/2015/3580/NH-208/FDPR/PP Revision Mkd. - R0 Sheet No. - 02 of 13	
PROJECT: Consultancy Services for Preparation of Feasibility Study and DPR for Improvement and Widening to Two Lane with 1.5 m Paved Shoulder of Newly Declared NH-208 (Length 157.70 Km) for Execution on EPC Mode in the State of Tripura under NH(O)		ROAD NAME: Kailashahar to Teliamura Section of NH-208		Package-IV (Km 63+700 to Km 75+700)		Drawn By: M.Acharya Design By: S.Dey Checked By: S.Sadhu Approved By: B.Koner		DATE: JUNE, 2017		REVISIONS	

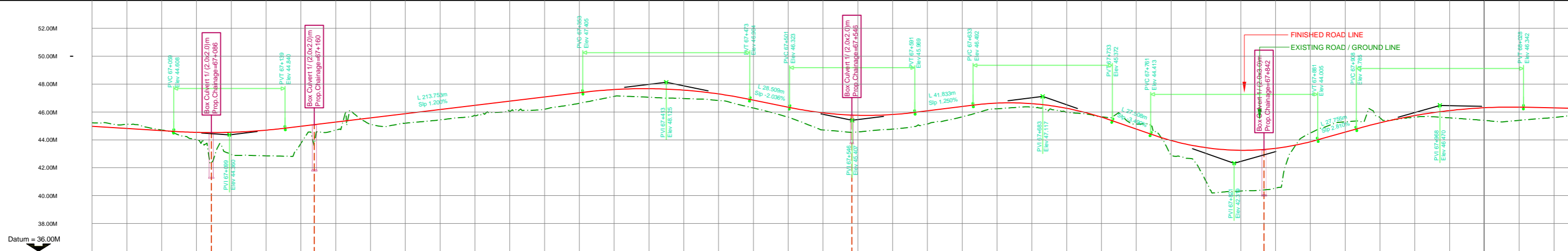
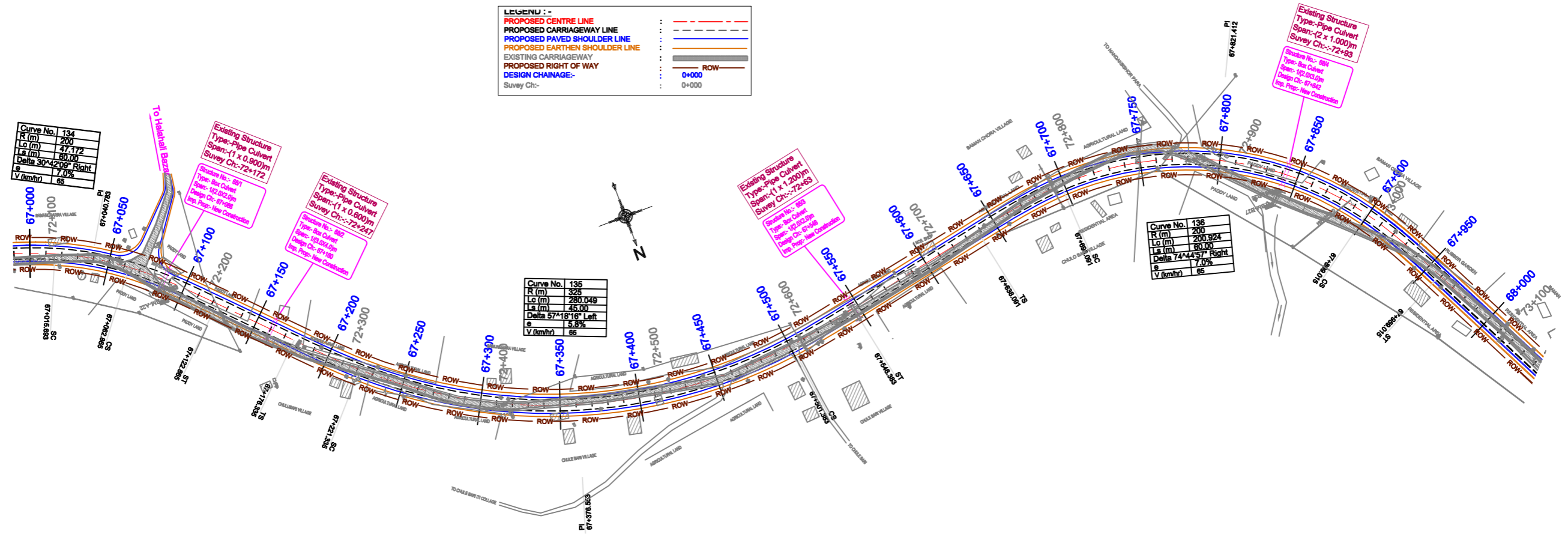


FINISHED ROAD LEVEL ALONG THE PROPOSED CL.	46.594	46.450	46.342	46.336	46.423	46.525	46.627	46.729	46.831	46.933	47.035	47.183	47.641	48.449	49.396	50.276	50.972	51.169	51.166	50.863	50.261	49.529	48.797	48.065	47.334	46.602	46.037	45.793	45.867	46.154	46.445	46.725	46.933	46.924	46.921	46.674	46.526	46.379	46.232	46.084	45.937	45.790	45.642	
EXISTING GROUND LEVEL ALONG THE PROPOSED CL.	47.259	47.288	47.742	48.282	47.948	46.936	47.121	46.953	47.020	51.431	50.666	48.481	46.933	45.967	49.017	51.284	52.360	51.979	51.793	50.776	50.593	49.370	48.170	47.350	49.136	49.393	46.419	46.889	48.281	45.229	46.154	45.234	45.996	46.215	45.957	44.621	42.071	42.961	45.017	47.787	49.679	45.442	44.347	44.762
HORIZONTAL ALIGNMENT	L 90.00 A 150.00 R 250.00 L 156.63 R 155.00 L 90.00 A 111.36 R 155.00 L 103.67 R 155.00 L 80.00 A 111.36 R 200.00 L 36.68 R 200.00																																											
VERTICAL ALIGNMENT	L60.000 L1 30.000 L2 30.000 L173.498 Sip: 0.409% L36.007 Sip: 3.789% L140.000 L1 70.000 L2 70.000 L126.155 Sip: -2.927% L80.000 L1 40.000 L2 40.000 L60.604 Sip: 1.165% L80.000 L1 40.000 L2 40.000																																											
SUPERELEVATION (e %)	0.25% 0.25%																																											
CHAINAGE (KM)	65+000	65+025	65+050	65+075	65+100	65+125	65+150	65+175	65+200	65+225	65+250	65+275	65+300	65+325	65+350	65+375	65+400	65+425	65+450	65+475	65+500	65+525	65+550	65+575	65+600	65+625	65+650	65+675	65+700	65+725	65+750	65+775	65+800	65+825	65+850	65+875	65+900	65+925	65+950	65+975	66+000	66+025	66+050	

SCALE: HOR - 1:2000 VER - 1:200 CLIENT: Public Works Department, Government of Tripura National Highways & Infrastructure Development Corporation Ltd. PROJECT: Consultancy Services for Preparation of Feasibility Study and DPR for Improvement and Widening to Two Lane with 1.5 m Paved Shoulder of Newly Declared NH-208 (Length 157.70 Km) for Execution on EPC Mode in the State of Tripura under NH(O)		PLAN & PROFILE Km 65+000 to Km 66+000 ROAD NAME: Kailashahar to Teliamura Section of NH-208 Package: IV (Km 63+700 to Km 75+700)		CONSULTANT: CE TESTING COMPANY PVT. LTD. 124-A, N.S.C. Bose Road, Kolkata - 700092.		Dwg. No. CET/2015/3580/NH-208/FDPR/PP Revision Mkd. - R0 Sheet No. - 03 of 13 Drawn By: M.Acharya, Design By: S.Dey, Checked By: S.Sadhu, Approved By: B.Koner	
MKD.	DATE	DESCRIPTION	CHKD.	APPRD.	DATE: JUNE, 2017		
REVISIONS							

LEGEND :-

PROPOSED CENTRE LINE	---
PROPOSED CARRIAGEWAY LINE	---
PROPOSED PAVED SHOULDER LINE	---
PROPOSED EARTHEN SHOULDER LINE	---
EXISTING CARRIAGEWAY	---
PROPOSED RIGHT OF WAY	---
DESIGN CHAINAGE	---
Survey Ch:-	0+000



FINISHED ROAD LEVEL ALONG THE PROPOSED CL.	44.974	44.819	44.664	44.538	44.545	44.694	44.972	45.272	45.672	45.972	46.172	46.472	46.772	47.072	47.372	47.606	47.871	48.068	48.297	48.588	48.849	49.143	49.465	49.815	50.140	50.491	50.863	51.172	51.511	51.884	52.291	52.732	53.106	53.513	53.954	54.430	54.941	55.487	56.068	56.684	57.335	58.021	58.742	59.498	60.290	61.118	62.000	62.925	63.894	64.907	65.964	67.065	68.210	69.400	70.634	71.913	73.237	74.606	76.020	77.479	78.983	80.532	82.126	83.765	85.449	87.178	88.952	90.771	92.635	94.544	96.498	98.497	100.541	102.630	104.764	106.943	109.167	111.436	113.750	116.109	118.513	120.962	123.456	125.995	128.579	131.208	133.882	136.601	139.365	142.174	145.028	147.927	150.871	153.860	156.894	159.973	163.097	166.266	169.480	172.739	176.043	179.392	182.786	186.225	189.709	193.238	196.812	200.431	204.095	207.804	211.558	215.357	219.201	223.090	227.024	231.003	235.027	239.096	243.210	247.369	251.573	255.822	260.116	264.455	268.839	273.268	277.742	282.261	286.820	291.419	296.058	300.737	305.456	310.215	315.014	319.853	324.732	329.651	334.610	339.609	344.648	349.727	354.846	359.995	365.174	370.383	375.622	380.891	386.190	391.529	396.908	402.327	407.786	413.275	418.794	424.343	429.922	435.531	441.170	446.839	452.538	458.267	464.026	469.815	475.634	481.483	487.362	493.271	499.210	505.179	511.178	517.207	523.266	529.355	535.474	541.623	547.802	554.011	560.250	566.519	572.818	579.147	585.506	591.895	598.314	604.763	611.242	617.751	624.290	630.859	637.458	644.087	650.746	657.435	664.154	670.903	677.682	684.491	691.330	698.199	705.098	712.027	718.986	725.975	732.994	740.043	747.122	754.231	761.370	768.539	775.738	782.967	790.226	797.515	804.834	812.183	819.562	826.971	834.410	841.879	849.378	856.907	864.466	872.055	879.674	887.323	894.992	902.691	910.420	918.179	925.968	933.787	941.636	949.515	957.424	965.363	973.332	981.331	989.360	997.419	1005.508	1013.627	1021.776	1029.955	1038.164	1046.403	1054.672	1062.971	1071.290	1079.639	1088.018	1096.427	1104.866	1113.335	1121.834	1130.363	1138.922	1147.511	1156.130	1164.779	1173.458	1182.167	1190.906	1199.675	1208.474	1217.303	1226.162	1235.051	1243.970	1252.919	1261.888	1270.877	1279.896	1288.945	1298.024	1307.133	1316.272	1325.441	1334.640	1343.869	1353.128	1362.417	1371.736	1381.085	1390.464	1400.000	1409.590	1419.230	1428.920	1438.650	1448.420	1458.230	1468.080	1477.970	1487.900	1497.870	1507.880	1517.930	1528.020	1538.150	1548.320	1558.530	1568.780	1579.070	1589.400	1599.770	1609.180	1618.630	1628.120	1637.640	1647.190	1656.770	1666.390	1676.040	1685.720	1695.430	1705.170	1714.940	1724.740	1734.570	1744.430	1754.320	1764.240	1774.190	1784.170	1794.180	1804.220	1814.290	1824.390	1834.520	1844.680	1854.870	1865.090	1875.340	1885.620	1895.930	1906.270	1916.640	1927.040	1937.470	1947.930	1958.420	1968.940	1979.490	1989.970	2000.480	2011.020	2021.590	2032.190	2042.820	2053.480	2064.170	2074.890	2085.640	2096.420	2107.230	2118.070	2128.940	2139.840	2150.770	2161.730	2172.720	2183.740	2194.790	2205.870	2216.980	2228.120	2239.290	2250.490	2261.720	2272.980	2284.270	2295.590	2306.940	2318.320	2329.730	2341.170	2352.640	2364.140	2375.670	2387.230	2398.820	2410.440	2422.090	2433.770	2445.480	2457.220	2468.990	2480.790	2492.620	2504.480	2516.370	2528.290	2540.240	2552.220	2564.230	2576.270	2588.340	2600.440	2612.570	2624.730	2636.920	2649.140	2661.390	2673.670	2685.980	2698.320	2710.690	2723.090	2735.520	2747.980	2760.470	2772.990	2785.540	2798.120	2810.730	2823.370	2836.040	2848.740	2861.470	2874.230	2887.020	2899.840	2912.690	2925.570	2938.480	2951.420	2964.390	2977.390	2990.420	3003.480	3016.570	3029.690	3042.840	3056.020	3069.230	3082.470	3095.740	3109.040	3122.370	3135.730	3149.120	3162.540	3176.000	3189.490	3203.010	3216.560	3230.140	3243.750	3257.390	3271.060	3284.760	3298.490	3312.250	3326.040	3339.860	3353.710	3367.590	3381.500	3395.440	3409.410	3423.410	3437.440	3451.500	3465.590	3479.710	3493.860	3508.040	3522.250	3536.490	3550.760	3565.060	3579.390	3593.750	3608.140	3622.560	3637.010	3651.490	3666.000	3680.540	3695.110	3709.710	3724.340	3738.990	3753.670	3768.380	3783.120	3797.890	3812.690	3827.520	3842.380	3857.270	3872.190	3887.140	3902.120	3917.130	3932.170	3947.240	3962.340	3977.470	3992.630	4007.820	4023.040	4038.290	4053.570	4068.880	4084.220	4099.590	4114.990	4130.420	4145.880	4161.370	4176.890	4192.440	4208.020	4223.630	4239.270	4254.940	4270.640	4286.370	4302.130	4317.920	4333.740	4349.590	4365.470	4381.380	4397.320	4413.290	4429.290	4445.320	4461.380	4477.470	4493.590	4509.740	4525.920	4542.130	4558.370	4574.640	4590.940	4607.270	4623.630	4639.920	4656.240	4672.590	4688.970	4705.380	4721.820	4738.290	4754.790	4771.320	4787.880	4804.470	4821.090	4837.740	4854.420	4871.130	4887.870	4904.640	4921.440	4938.270	4955.130	4972.020	4988.940	5005.890	5022.870	5039.880	5056.920	5073.990	5091.090	5108.220	5125.380	5142.570	5159.790	5177.040	5194.320	5211.630	5228.970	5246.340	5263.740	5281.170	5298.630	5316.120	5333.640	5351.190	5368.770	5386.380	5404.020	5421.690	5439.390	5457.120	5474.880	5492.670	5510.490	5528.340	5546.220	5564.130	5582.070	5600.040	5618.040	5636.070	5654.130	5672.220	5690.340	5708.490	5726.670	5744.880	5763.120	5781.390	5800.000	5818.640	5837.310	5856.010	5874.740	5893.500	5912.290	5931.110	5950.000	5968.920	5987.870	6006.850	6025.860	6044.900	6063.970	6083.070	6102.200	6121.360	6140.550	6159.770	6179.020	6198.300	6217.610	6236.950	6256.320	6275.720	6295.150	6314.610	6334.100	6353.620	6373.170	6392.750	6412.360	6432.000	6451.670	6471.380	6491.120	6510.890	6530.690	6550.520	6570.380	6590.270	6610.190	6630.140	6650.120	6670.130	6690.170	6710.240	6730.340	6750.470	6770.630	6790.820	6811.040	6831.290	6851.570	6871.880	6892.220	6912.590	6933.000	6953.440	6973.910	6994.410	7014.940	7035.500	7056.090	7076.710	7097.360	7118.040	7138.750	7159.490	7180.260	7201.070	7221.910	7242.780	7263.690	7284.640	7305.620	7326.630	7347.670	7368.740	7389.840	7410.970	7432.140	7453.340	7474.570	7495.840	7517.140	7538.470	7559.840	7581.240	7602.670	7624.140	7645.640	7667.170	7688.730	7710.320	7731.940	7753.590	7775.270	7796.980	7818.720	7840.490	7862.290	7884.120	7905.980	7927.870	7949.790	7971.740	7993.720	8015.730	8037.770	8059.840	8081.940	8104.070	8126.230	8148.420	8170.640	8192.890	8215.170	8237.480	8259.820	8282.190	8304.590	8327.020	8349.480	8371.970	8394.490	8417.040	8439.620	8462.230	8484.870	8507.540	8530.240	8552.970	8575.730	8598.520	8621.340	8644.190	8667.070	8689.980	8712.920	8735.890	8758.890	8781.920	8804.980	8828.070	8851.190	8874.340	8897.520	8920.730	8943.970	8967.240	8990.540	9013.870	9037.230	9060.620	9084.040	9107.490	9130.970	9154.480	9178.020	9201.590	9225.190	9248.820	9272.480	9296.170	9319.890	9343.640	9367.420	9391.230	9415.070	9438.940	9462.840	9486.770	9510.730	9534.720	9558.740	9582.790	9606.870	9630.980	9655.120	9679.290	9703.490	9727.720	9751.980	9776.270	9800.590	9824.940	9849.320	9873.730	9898.170	9922.640	9947.140	9971.670	9996.230	10010.820	10035.440	10060.090	10084.770	10109.480	10134.220	10158.990	10183.790	10208.620	10233.480	10258.370	10283.290	10308.240	10333.220	10358.230	10383.270	10408.340	10433.440	10458.570	10483.730	10508.920	10534.140	10559.390	10584.670	10609.980	10635.320	10660.690	10686.090	10711.520	10736.980	10762.470	10787.990	10813.540	10839.120	10864.730	10890.370	10916.040	10941.740	10967.470	10993.230	11019.020	11044.840	11070.690	11096.570	11122.480	11148.420	11174.390	11200.390	11226.420	11252.480	11278.570	11304.690	11330.840	11357.020	11383.230	11409.470	11435.740	11462.040	11488.370	11514.730	11541.120	11567.540	11593.990	11620.470	11646.980	11673.520	11700.090	11726.690	11753.320	11779.980	11806.670	11833.390	11860.140	11886.920	11913.730	11940.570	11967.440	11994.340	12021.270	12048.230	12075.220	12102.240	12129.290	12156.370	12183.480	12210.620	12237.790	12264.990	12292.220	12319.480	12346.770	12374.090	12401.440	12428.820	12456.230	12483.670	12511.140	12538.640	12566.170	12593.730	12621.320	1264
--	--------	--------	--------	--------	--------	--------	--------	--------	--------	--------	--------	--------	--------	--------	--------	--------	--------	--------	--------	--------	--------	--------	--------	--------	--------	--------	--------	--------	--------	--------	--------	--------	--------	--------	--------	--------	--------	--------	--------	--------	--------	--------	--------	--------	--------	--------	--------	--------	--------	--------	--------	--------	--------	--------	--------	--------	--------	--------	--------	--------	--------	--------	--------	--------	--------	--------	--------	--------	--------	--------	--------	--------	---------	---------	---------	---------	---------	---------	---------	---------	---------	---------	---------	---------	---------	---------	---------	---------	---------	---------	---------	---------	---------	---------	---------	---------	---------	---------	---------	---------	---------	---------	---------	---------	---------	---------	---------	---------	---------	---------	---------	---------	---------	---------	---------	---------	---------	---------	---------	---------	---------	---------	---------	---------	---------	---------	---------	---------	---------	---------	---------	---------	---------	---------	---------	---------	---------	---------	---------	---------	---------	---------	---------	---------	---------	---------	---------	---------	---------	---------	---------	---------	---------	---------	---------	---------	---------	---------	---------	---------	---------	---------	---------	---------	---------	---------	---------	---------	---------	---------	---------	---------	---------	---------	---------	---------	---------	---------	---------	---------	---------	---------	---------	---------	---------	---------	---------	---------	---------	---------	---------	---------	---------	---------	---------	---------	---------	---------	---------	---------	---------	---------	---------	---------	---------	---------	---------	---------	---------	---------	---------	---------	---------	---------	---------	---------	---------	---------	---------	---------	---------	---------	---------	---------	---------	---------	---------	---------	---------	---------	---------	---------	---------	---------	---------	---------	---------	---------	---------	---------	----------	----------	----------	----------	----------	----------	----------	----------	----------	----------	----------	----------	----------	----------	----------	----------	----------	----------	----------	----------	----------	----------	----------	----------	----------	----------	----------	----------	----------	----------	----------	----------	----------	----------	----------	----------	----------	----------	----------	----------	----------	----------	----------	----------	----------	----------	----------	----------	----------	----------	----------	----------	----------	----------	----------	----------	----------	----------	----------	----------	----------	----------	----------	----------	----------	----------	----------	----------	----------	----------	----------	----------	----------	----------	----------	----------	----------	----------	----------	----------	----------	----------	----------	----------	----------	----------	----------	----------	----------	----------	----------	----------	----------	----------	----------	----------	----------	----------	----------	----------	----------	----------	----------	----------	----------	----------	----------	----------	----------	----------	----------	----------	----------	----------	----------	----------	----------	----------	----------	----------	----------	----------	----------	----------	----------	----------	----------	----------	----------	----------	----------	----------	----------	----------	----------	----------	----------	----------	----------	----------	----------	----------	----------	----------	----------	----------	----------	----------	----------	----------	----------	----------	----------	----------	----------	----------	----------	----------	----------	----------	----------	----------	----------	----------	----------	----------	----------	----------	----------	----------	----------	----------	----------	----------	----------	----------	----------	----------	----------	----------	----------	----------	----------	----------	----------	----------	----------	----------	----------	----------	----------	----------	----------	----------	----------	----------	----------	----------	----------	----------	----------	----------	----------	----------	----------	----------	----------	----------	----------	----------	----------	----------	----------	----------	----------	----------	----------	----------	----------	----------	----------	----------	----------	----------	----------	----------	----------	----------	----------	----------	----------	----------	----------	----------	----------	----------	----------	----------	----------	----------	----------	----------	----------	----------	----------	----------	----------	----------	----------	----------	----------	----------	----------	----------	----------	----------	----------	----------	----------	----------	----------	----------	----------	----------	----------	----------	----------	----------	----------	----------	----------	----------	----------	----------	----------	----------	----------	----------	----------	----------	----------	----------	----------	----------	----------	----------	----------	----------	----------	----------	----------	----------	----------	----------	----------	----------	----------	----------	----------	----------	----------	----------	----------	----------	----------	----------	----------	----------	----------	----------	----------	----------	----------	----------	----------	----------	----------	----------	----------	----------	----------	----------	----------	----------	----------	----------	----------	----------	----------	----------	----------	----------	----------	----------	----------	----------	----------	----------	----------	----------	----------	----------	----------	----------	----------	----------	----------	----------	----------	----------	----------	----------	----------	----------	----------	----------	----------	----------	----------	----------	----------	----------	----------	----------	----------	----------	----------	----------	----------	----------	----------	----------	----------	----------	----------	----------	----------	----------	----------	----------	----------	----------	----------	----------	----------	----------	----------	----------	----------	----------	----------	----------	----------	----------	----------	----------	----------	----------	----------	----------	----------	----------	----------	----------	----------	----------	----------	----------	----------	----------	----------	----------	----------	----------	----------	----------	----------	----------	----------	----------	----------	----------	----------	----------	----------	----------	----------	----------	----------	----------	----------	----------	----------	----------	----------	----------	----------	----------	----------	----------	----------	----------	----------	----------	----------	----------	----------	----------	----------	----------	----------	----------	----------	----------	----------	----------	----------	----------	----------	----------	----------	----------	----------	----------	----------	----------	----------	----------	----------	----------	----------	----------	----------	----------	----------	----------	----------	----------	----------	----------	----------	----------	----------	----------	----------	----------	----------	----------	----------	----------	----------	----------	----------	----------	----------	----------	----------	----------	----------	----------	----------	----------	----------	----------	----------	----------	----------	----------	----------	----------	----------	----------	----------	----------	----------	----------	----------	----------	----------	----------	----------	----------	----------	----------	----------	----------	----------	----------	----------	----------	----------	----------	----------	----------	----------	----------	----------	----------	----------	----------	----------	----------	----------	----------	----------	----------	----------	----------	----------	----------	----------	----------	----------	----------	----------	----------	----------	----------	----------	----------	----------	----------	----------	-----------	-----------	-----------	-----------	-----------	-----------	-----------	-----------	-----------	-----------	-----------	-----------	-----------	-----------	-----------	-----------	-----------	-----------	-----------	-----------	-----------	-----------	-----------	-----------	-----------	-----------	-----------	-----------	-----------	-----------	-----------	-----------	-----------	-----------	-----------	-----------	-----------	-----------	-----------	-----------	-----------	-----------	-----------	-----------	-----------	-----------	-----------	-----------	-----------	-----------	-----------	-----------	-----------	-----------	-----------	-----------	-----------	-----------	-----------	-----------	-----------	-----------	-----------	-----------	-----------	-----------	-----------	-----------	-----------	-----------	-----------	-----------	-----------	-----------	-----------	-----------	-----------	-----------	-----------	-----------	-----------	-----------	-----------	-----------	-----------	-----------	-----------	-----------	-----------	-----------	-----------	-----------	-----------	-----------	-----------	-----------	-----------	-----------	-----------	-----------	-----------	------



PROPOSED CENTRE LINE (---)

PROPOSED CARRIAGEWAY LINE (---)

PROPOSED PAVED SHOULDER LINE (---)

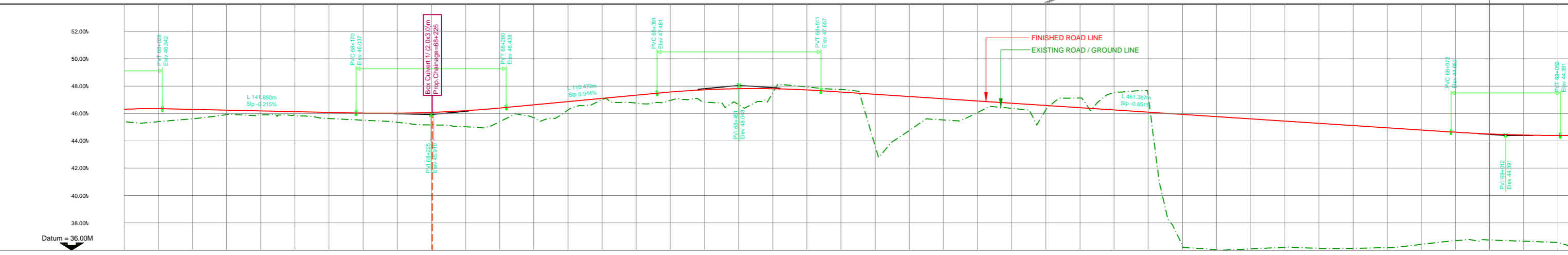
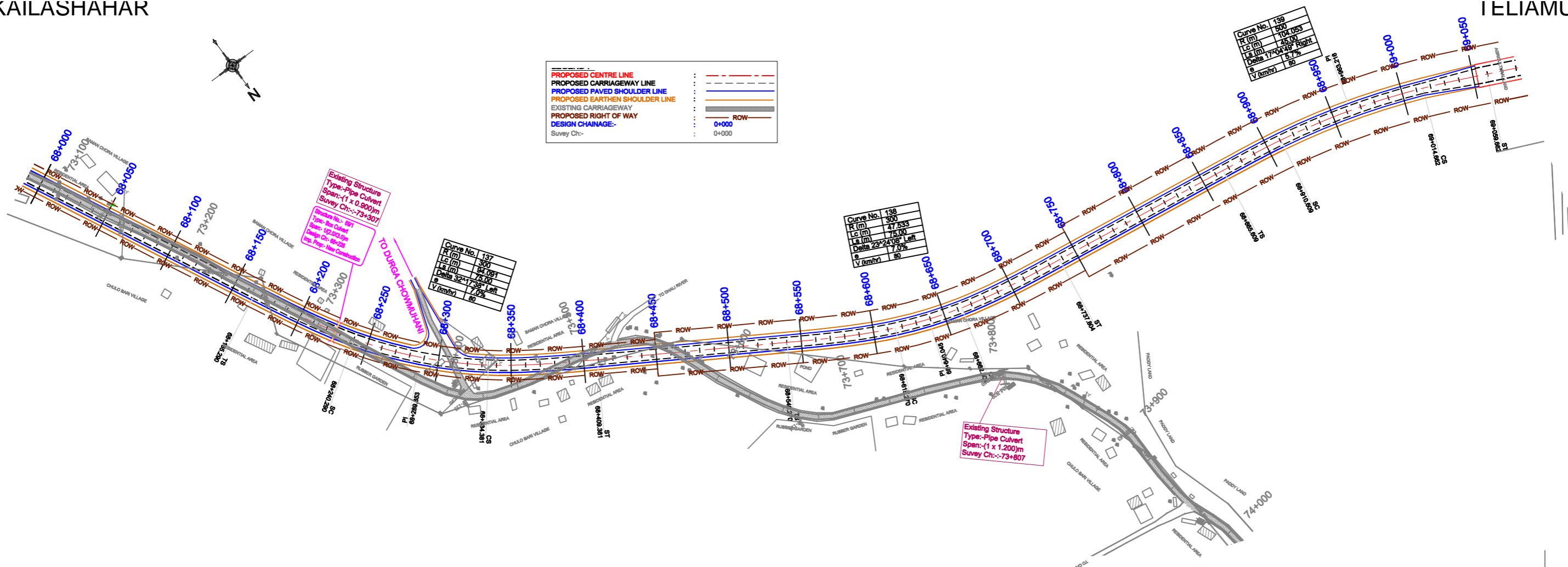
PROPOSED EARTHEN SHOULDER LINE (---)

EXISTING CARRIAGEWAY (---)

PROPOSED RIGHT OF WAY (---)

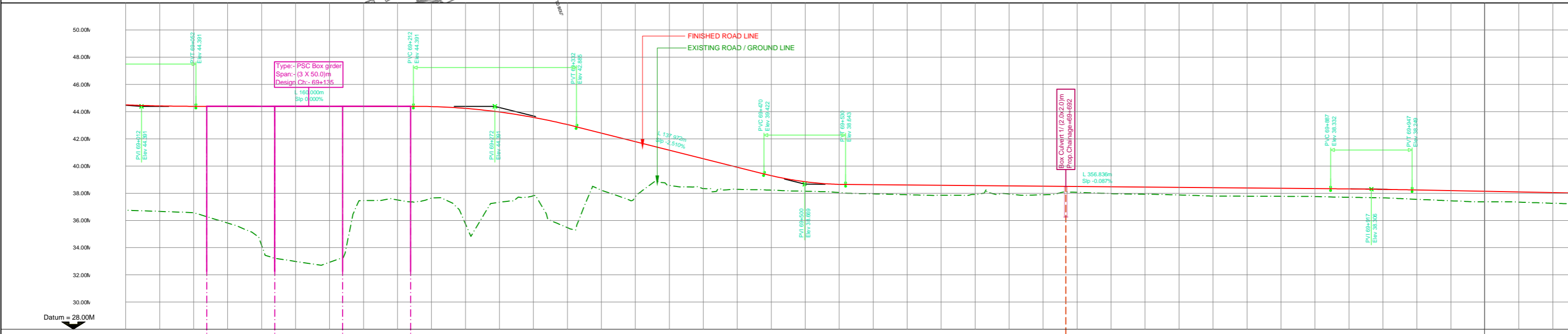
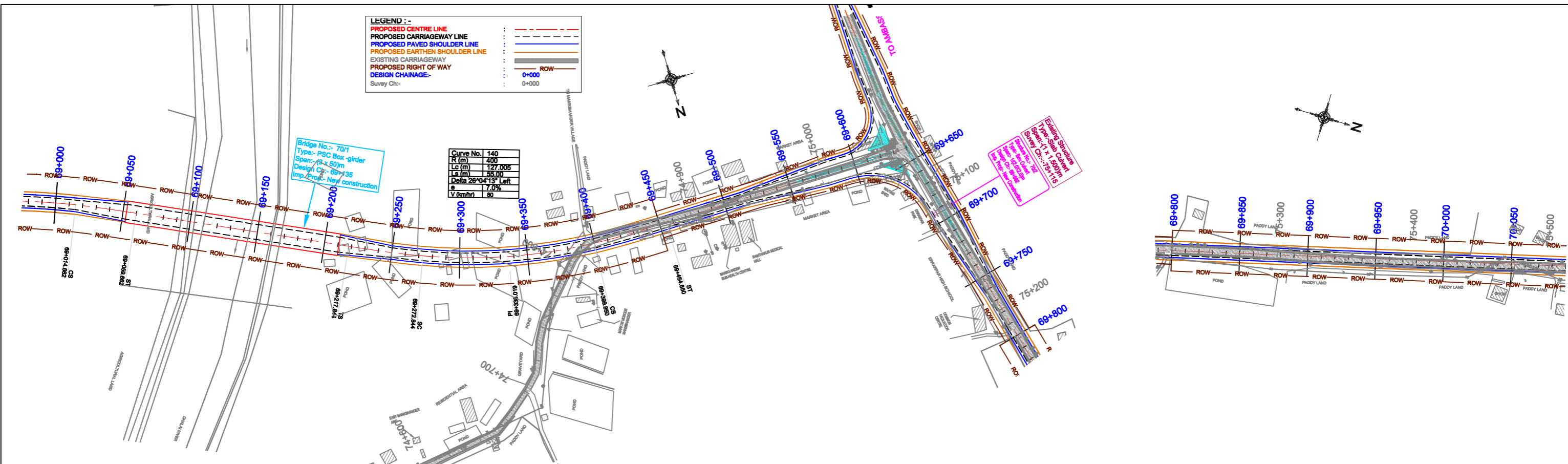
DESIGN CHAINAGE:-

Survey Ch:- 0+000



FINISHED ROAD LEVEL ALONG THE PROPOSED CL	46.301	46.347	46.295	46.241	46.188	46.134	46.080	46.028	46.020	46.078	46.201	46.391	46.625	46.862	47.098	47.334	47.564	47.727	47.907	47.805	47.719	47.563	47.400	47.238	47.075	46.912	46.749	46.586	46.423	46.261	46.098	45.935	45.772	45.609	45.446	45.283	45.121	44.958	44.795	44.632	44.501	44.421	44.391																																					
EXISTING GROUND LEVEL ALONG THE PROPOSED CL	45.398	45.398	45.604	45.912	45.892	45.876	45.632	45.508	45.360	45.161	45.032	45.384	45.689	46.224	46.987	46.765	46.942	46.830	46.664	47.456	47.942	47.748	43.715	44.732	45.526	46.053	46.373	46.225	47.124	47.531	47.481	36.412	36.051	36.103	36.210	36.142	36.146	36.192	36.430	36.707	36.757	36.667	36.561																																					
HORIZONTAL ALIGNMENT	L 75.00 A 150.00										L 94.09 R 300.00										L 75.00 A 150.00										L 47.53 R 300.00										L 75.00 A 150.00										L 45.00 A 150.00										L 104.05 R 500.00										L 45.00 A 150.00									
VERTICAL ALIGNMENT	L 141.850 Slip -0.215%										L 110.000 L1 55.000 L2 55.000										L 110.472 Slip 0.944%										L 120.000 L1 60.000 L2 60.000										L 461.378 Slip -0.651%										L 80.000 L1 40.000 L2 40.000																													
SUPERELEVATION (e %)	0.00%										0.00%										0.00%										0.00%										0.00%										0.00%																													
CHAINAGE (KM)	68+000	68+025	68+050	68+075	68+100	68+125	68+150	68+175	68+200	68+225	68+250	68+275	68+300	68+325	68+350	68+375	68+400	68+425	68+450	68+475	68+500	68+525	68+550	68+575	68+600	68+625	68+650	68+675	68+700	68+725	68+750	68+775	68+800	68+825	68+850	68+875	68+900	68+925	68+950	68+975	69+000	69+025	69+050																																					

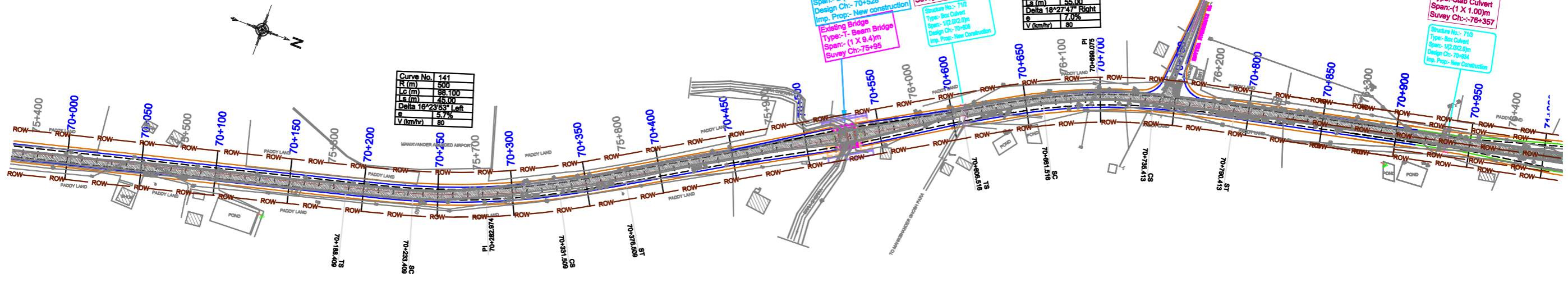
SCALE: HOR - 1:2000 VER - 1:200		CLIENT: Public Works Department Government of Tripura		National Highways & Infrastructure Development Corporation Ltd.		PLAN & PROFILE Km 68+000 to Km 69+000		CONSULTANT : CETEST CE TESTING COMPANY PVT. LTD. Engineering Consultants 124-A, N.S.C. Bose Road Kolkata - 700092.		Dwg. No. CET/2015/3580/NH-208/FDPR/PP	
PROJECT: Consultancy Services for Preparation of Feasibility Study and DPR for Improvement and Widening to Two Lane with 1.5 m Paved Shoulder of Newly Declared NH-208 (Length 157.70 Km) for Execution on EPC Mode in the State of Tripura under NH(O)		ROAD NAME: Kailashahar to Teliamura Section of NH-208		Package:-IV (Km 63+700 to Km 75+700)		Revision Mkd. - R0		Sheet No. - 06 of 13		Drawn By: M.Acharya Design By: S.Dey Checked By: S.Sadhu Approved By: B.Koner	
DATE: JUNE, 2017		REVISIONS		DATE: JUNE, 2017		MKD. DATE DESCRIPTION CHKD. APPRD.		M.Acharya S.Dey S.Sadhu B.Koner		M.Acharya S.Dey S.Sadhu B.Koner	



FINISHED ROAD LEVEL ALONG THE PROPOSED CL.	44.501	44.421	44.391	44.391	44.391	44.391	44.391	44.391	44.391	44.391	44.373	44.240	43.976	43.661	43.056	42.433	41.806	41.176	40.551	39.923	39.301	38.650	38.053	37.956	37.883	37.852	37.916	37.946	37.889	38.517	38.495	38.473	38.451	38.430	38.408	38.386	38.364	38.342	38.319	38.286	38.243	38.196	38.149	38.101	38.054			
EXISTING GROUND LEVEL ALONG THE PROPOSED CL.	36.757	36.667	36.561	35.818	34.276	32.962	32.916	37.459	37.513	37.636	35.827	37.328	37.813	35.483	38.235	37.688	38.573	38.339	38.289	38.230	38.148	38.053	37.956	37.883	37.852	37.916	37.946	37.889	38.067	37.973	37.930	37.875	37.797	37.784	37.773	37.759	37.705	37.660	37.555	37.446	37.370	37.352	37.264					
HORIZONTAL ALIGNMENT	L 45.00 A 150.00		L 55.00 A 148.32		L 127.01 R 400.00		L 55.00 A 148.32																																									
VERTICAL ALIGNMENT	L80.000 L1 40.000 L2 40.000		L160.000 Sp 0.000%		L120.000 L1 60.000 L2 60.000		L137.929 Sp -2.510%		L60.000 L1 30.000 L2 30.000		L356.836 Sp -0.087%		L60.000 L1 30.000 L2 30.000																																			
SUPERELEVATION (e %)	0.00%		0.00%		0.00%		0.00%		0.00%		0.00%		0.00%		0.00%		0.00%		0.00%		0.00%		0.00%		0.00%		0.00%		0.00%		0.00%		0.00%		0.00%		0.00%		0.00%		0.00%		0.00%		0.00%		0.00%	
CHAINAGE (KM)	69+000	69+025	69+050	69+075	69+100	69+125	69+150	69+175	69+200	69+225	69+250	69+275	69+300	69+325	69+350	69+375	69+400	69+425	69+450	69+475	69+500	69+525	69+550	69+575	69+600	69+625	69+650	69+675	69+700	69+725	69+750	69+775	69+800	69+825	69+850	69+875	69+900	69+925	69+950	69+975	70+000	70+025	70+050					

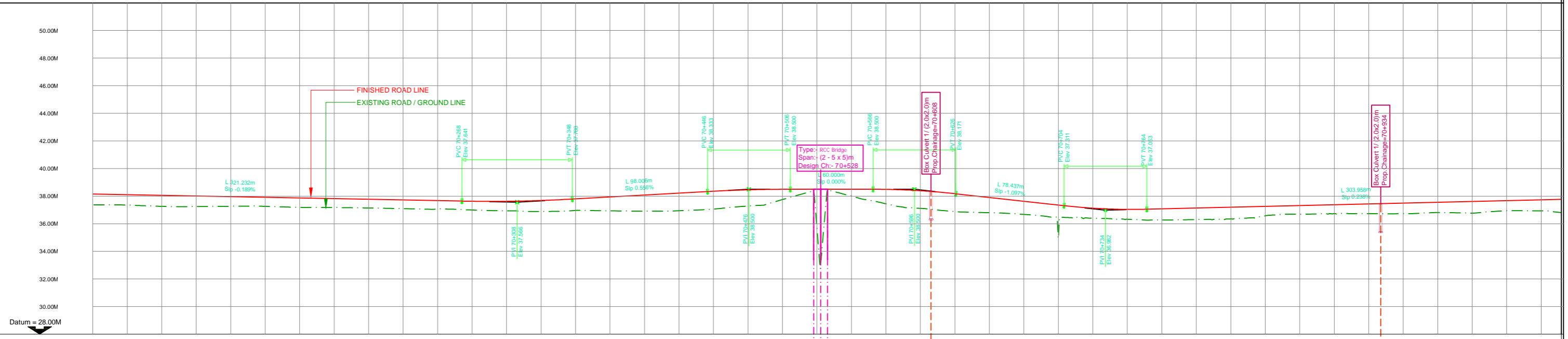
SCALE: HOR - 1:2000 VER - 1:200		CLIENT: Public Works Department Government of Tripura		National Highways & Infrastructure Development Corporation Ltd.		PLAN & PROFILE Km 69+000 to Km 70+000		CONSULTANT : CETEST CE TESTING COMPANY PVT. LTD. Engineering Consultants 124-A, N.S.C. Bose Road Kolkata - 700092.		Dwg. No. CET/2015/3580/NH-208/FDPR/PP Revision Mkd. - R0 Sheet No. - 07 of 13	
PROJECT: Consultancy Services for Preparation of Feasibility Study and DPR for Improvement and Widening to Two Lane with 1.5 m Paved Shoulder of Newly Declared NH-208 (Length 157.70 Km) for Execution on EPC Mode in the State of Tripura under NH(O)		ROAD NAME: Kailashahar to Teliamura Section of NH-208		PACKAGE:-IV (Km 63+700 to Km 75+700)		Drawn By. M.Acharya Design By. S.Dey Checked By. S.Sadhu Approved By. B.Koner					
DATE: JUNE, 2017											

PROPOSED CENTRE LINE	---
PROPOSED CARRIAGEWAY LINE	---
PROPOSED PAVED SHOULDER LINE	---
PROPOSED EARTHEN SHOULDER LINE	---
EXISTING CARRIAGEWAY	---
PROPOSED RIGHT OF WAY	---
DESIGN CHAINAGE:-	0+000
Survey Ch:-	0+000



Curve No. 141	500
R (m)	98.100
Lc (m)	45.00
Delta	18°23'53" Left
e	1.7%
V (km/hr)	80

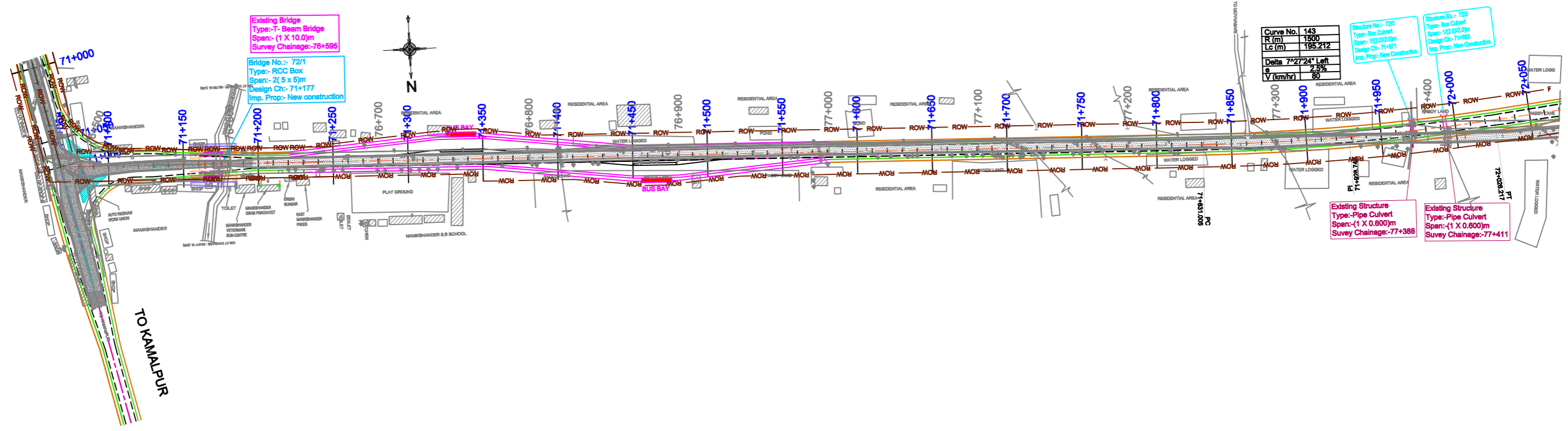
Curve No. 142	400
R (m)	73.897
Lc (m)	55.00
Delta	18°27'47" Right
e	7.0%
V (km/hr)	80



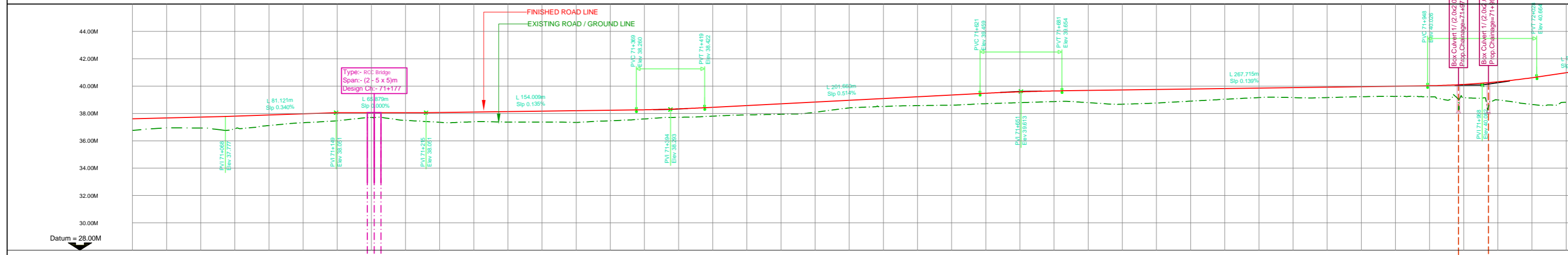
FINISHED ROAD LEVEL ALONG THE PROPOSED CL	38.149	38.101	38.054	38.007	37.959	37.912	37.865	37.817	37.770	37.723	37.675	37.630	37.629	37.685	37.739	37.798	37.838	38.077	38.216	38.355	38.455	38.498	38.500	38.500	38.493	38.494	38.482	37.908	37.634	37.359	37.132	37.042	37.078	37.138	36.952	37.257	37.316	37.376	37.435	37.495	37.554	37.614	37.673	37.733																																																																		
EXISTING GROUND LEVEL ALONG THE PROPOSED CL	37.370	37.352	37.264	37.247	37.268	37.262	37.186	37.176	37.141	37.099	37.071	36.998	36.938	36.888	36.959	36.936	36.912	36.942	37.062	37.286	37.740	36.084	38.005	37.452	37.118	36.879	36.800	36.677	35.186	36.404	36.327	36.271	36.302	36.352	36.569	36.686	36.732	36.732	36.727	36.819	36.770	36.944	36.932																																																																			
HORIZONTAL ALIGNMENT	L 45.00 A 150.00										L 98.10 R 500.00										L 45.00 A 150.00										L 55.00 A 148.32										L 73.90 R 400.00										L 55.00 A 148.32																																																											
VERTICAL ALIGNMENT	L 321.231 Sip -0.189%										L 80.000 L1 40.000 L2 40.000										L 98.004 Sip 0.556%										L 60.000 L1 30.000 L2 30.000										L 60.000 L1 30.000 L2 30.000										L 78.433 Sip -1.097%										L 60.000 L1 30.000 L2 30.000										L 303.957 Sip 0.238%																																							
SUPERELEVATION (e %)	70+000 to 70+100: 0.189%										70+100 to 70+200: 0.189%										70+200 to 70+300: 0.189%										70+300 to 70+400: 0.189%										70+400 to 70+500: 0.189%										70+500 to 70+600: 0.189%										70+600 to 70+700: 0.189%										70+700 to 70+800: 0.189%										70+800 to 70+900: 0.189%										70+900 to 70+950: 0.189%										70+950 to 71+050: 0.189%									
CHAINAGE (KM)	70+000	70+025	70+050	70+075	70+100	70+125	70+150	70+175	70+200	70+225	70+250	70+275	70+300	70+325	70+350	70+375	70+400	70+425	70+450	70+475	70+500	70+525	70+550	70+575	70+600	70+625	70+650	70+675	70+700	70+725	70+750	70+775	70+800	70+825	70+850	70+875	70+900	70+925	70+950	70+975	71+000	71+025	71+050																																																																			

SCALE: HOR - 1:2000 VER - 1:200		CLIENT: Public Works Department Government of Tripura		National Highways & Infrastructure Development Corporation Ltd.		PLAN & PROFILE Km 70+000 to Km 71+000		CONSULTANT : CETEST CE TESTING COMPANY PVT. LTD. Engineering Consultants 124-A, N.S.C. Bose Road Kolkata - 700092.		Dwg. No. CET/2015/3580/NH-208/FDPR/PP	
PROJECT: Consultancy Services for Preparation of Feasibility Study and DPR for Improvement and Widening to Two Lane with 1.5 m Paved Shoulder of Newly Declared NH-208 (Length 157.70 Km) for Execution on EPC Mode in the State of Tripura under NH(O)		ROAD NAME: Kailashahar to Teliamura Section of NH-208		PACKAGE:-IV (Km 63+700 to Km 75+700)		Revision Mkd. - R0		Sheet No. - 08 of 13		Drawn By: M.Acharya Design By: S.Dey Checked By: S.Sadhu Approved By: B.Koner	
DATE: JUNE, 2017		REVISIONS		MKD. DATE DESCRIPTION CHKD. APPRD.		M.Acharya		S.Dey		S.Sadhu	

PROPOSED CENTRE LINE
PROPOSED CARRIAGEWAY LINE
PROPOSED PAVED SHOULDER LINE
PROPOSED EARTHEN SHOULDER LINE
EXISTING CARRIAGEWAY
PROPOSED RIGHT OF WAY
DESIGN CHAINAGE:-
 Survey Ch:-

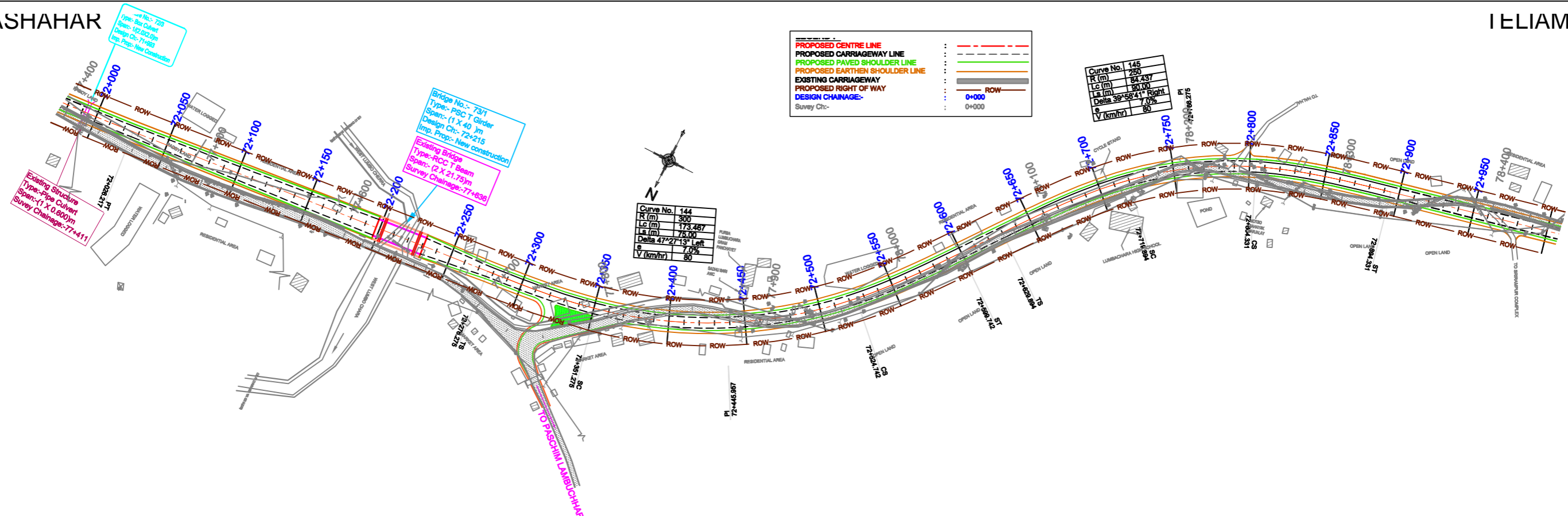


Curve No. 143	Structure No.:- 722	Structure No.:- 723
R (m) 1500	Type:- Box Culvert	Type:- Box Culvert
Lc (m) 195.212	Span:- 1(2.0x2.0)m	Span:- 1(2.0x2.0)m
Delta 7°27'24" Left	Design Ch:- 71+983	Design Ch:- 71+983
V (km/hr) 80	Imp. Prop:- New Construction	Imp. Prop:- New Construction



FINISHED ROAD LEVEL ALONG THE PROPOSED CL	37.614	37.673	37.733	37.776	37.799	37.884	37.969	38.051	38.051	38.051	38.065	38.088	38.132	38.166	38.200	38.234	38.269	38.338	38.453	38.581	38.710	38.838	38.967	39.095	39.224	39.352	39.480	39.582	39.646	39.681	39.716	39.751	39.786	39.820	39.855	39.890	39.924	39.959	39.994	40.029	40.122	40.317	40.615	40.976
EXISTING GROUND LEVEL ALONG THE PROPOSED CL	36.770	36.944	36.932	36.755	36.869	37.116	37.322	37.466	37.704	37.494	37.353	37.393	37.389	37.371	37.347	37.467	37.599	37.720	37.802	37.893	37.941	38.091	38.413	38.512	38.572	38.605	38.714	38.792	38.869	38.788	38.676	38.763	38.901	39.036	39.163	39.159	39.162	39.224	39.252	39.212	39.143	38.986	38.656	38.816
HORIZONTAL ALIGNMENT	L 195.21 R 1500.00																																											
VERTICAL ALIGNMENT	L 81.121 Slp 0.340% L 65.879 Slp 0.000% L 154.009 Slp 0.135% L 50.000 L1 25.000 L2 25.000 L 201.658 Slp 0.514% L 60.000 L1 30.000 L2 30.000 L 267.715 Slp 0.139% L 80.000 L1 40.000 L2 40.000 L 57.333 Slp 1.454%																																											
SUPERELEVATION (e %)	71+000.0 71+025.0 71+050.0 71+075.0 71+100.0 71+125.0 71+150.0 71+175.0 71+200.0 71+225.0 71+250.0 71+275.0 71+300.0 71+325.0 71+350.0 71+375.0 71+400.0 71+425.0 71+450.0 71+475.0 71+500.0 71+525.0 71+550.0 71+575.0 71+600.0 71+625.0 71+650.0 71+675.0 71+700.0 71+725.0 71+750.0 71+775.0 71+800.0 71+825.0 71+850.0 71+875.0 71+900.0 71+925.0 71+950.0 71+975.0 72+000.0 72+025.0 72+050.0																																											
CHAINAGE (KM)	71+000	71+025	71+050	71+075	71+100	71+125	71+150	71+175	71+200	71+225	71+250	71+275	71+300	71+325	71+350	71+375	71+400	71+425	71+450	71+475	71+500	71+525	71+550	71+575	71+600	71+625	71+650	71+675	71+700	71+725	71+750	71+775	71+800	71+825	71+850	71+875	71+900	71+925	71+950	71+975	72+000	72+025	72+050	

SCALE: HOR - 1:2000 VER - 1:200		CLIENT: Public Works Department Government of Tripura		National Highways & Infrastructure Development Corporation Ltd.		PLAN & PROFILE Km 71+000 to Km 72+000		CONSULTANT : CETEST CE TESTING COMPANY PVT. LTD. Engineering Consultants 124-A, N.S.C. Bose Road Kolkata - 700092.		Dwg. No. CET/2015/3580/NH-208/FDPR/PP	
PROJECT: Consultancy Services for Preparation of Feasibility Study and DPR for Improvement and Widening to Two Lane with 1.5 m Paved Shoulder of Newly Declared NH-208 (Length 157.70 Km) for Execution on EPC Mode in the State of Tripura under NH(O)		ROAD NAME: Kailashahar to Teliamura Section of NH-208		PACKAGE:-IV (Km 63+700 to Km 75+700)		Revision Mkd. - R0		Sheet No. - 09 of 13		Drawn By. Design By. Checked By. Approved By.	
DATE: JUNE, 2017		M.Acharya		S.Dey		S.Sadhu		B.Koner		M.KD. DATE DESCRIPTION CHKD. APPRD. REVISIONS	

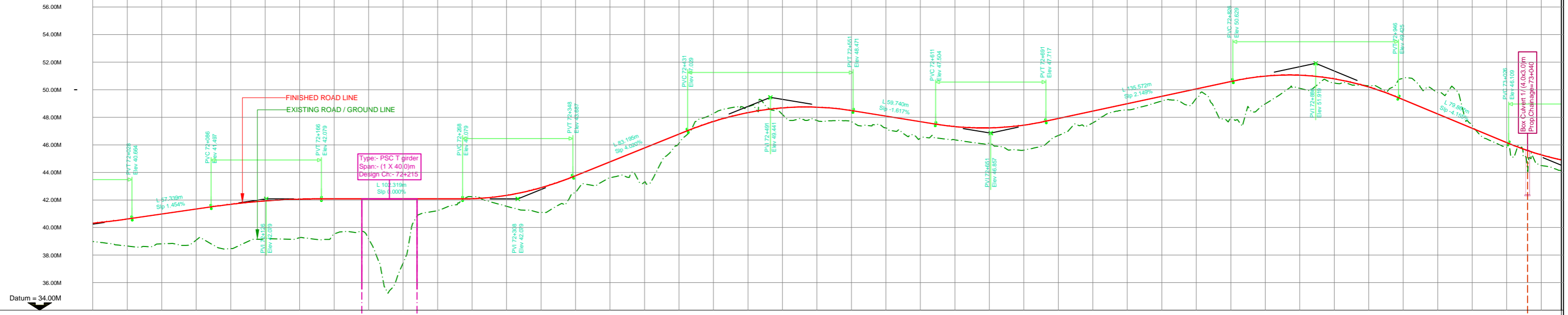


Curve No. 144

R (m)	300
Lc (m)	173.467
Ls (m)	75.00
Delta	47°27'13" Left
e	7.0%
V (km/hr)	80

Curve No. 145

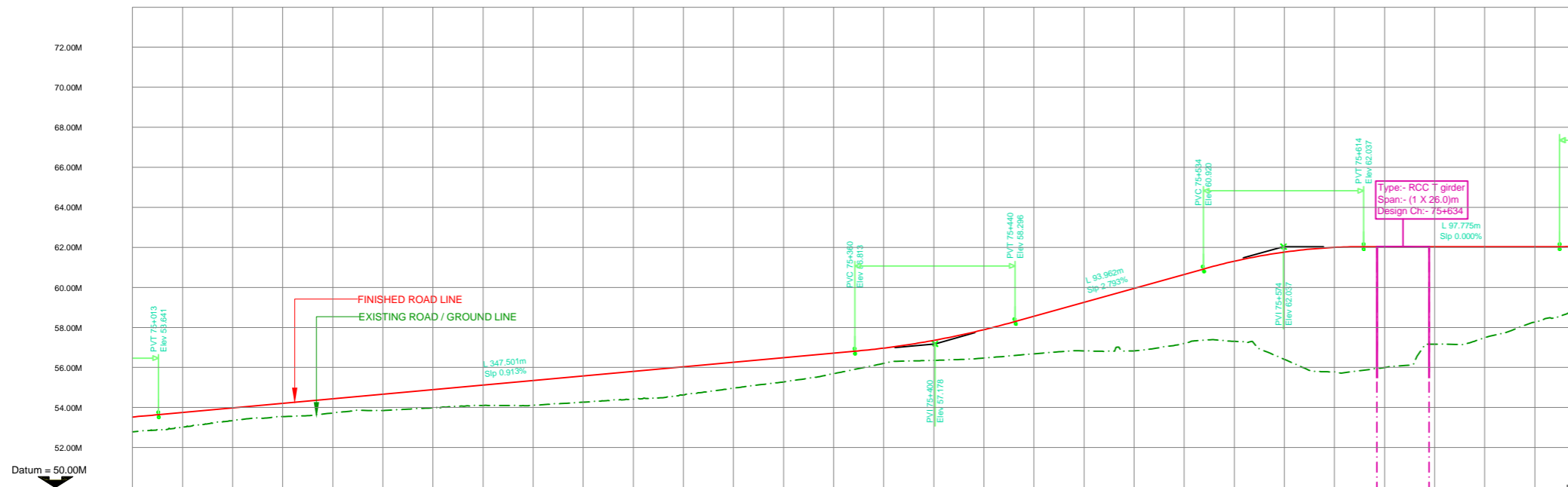
R (m)	250
Lc (m)	84.437
Ls (m)	90.00
Delta	39°58'41" Right
e	7.0%
V (km/hr)	80



FINISHED ROAD LEVEL ALONG THE PROPOSED CL.	40.317	40.615	40.978	41.342	41.687	41.928	42.057	42.079	42.079	42.079	42.079	42.079	42.081	42.336	42.894	43.766	44.771	45.776	46.781	47.703	48.340	48.683	48.767	48.489	48.085	47.681	47.323	46.100	47.232	47.435	47.913	48.450	48.987	49.524	50.061	50.599	50.990	51.053	50.789	50.195	49.277	48.238	47.398	46.161	45.274
EXISTING GROUND LEVEL ALONG THE PROPOSED CL.	38.986	38.656	38.816	38.099	38.469	39.200	39.270	39.530	39.176	37.447	41.223	42.241	41.544	41.086	42.549	43.607	43.313	46.136	48.274	48.774	48.198	47.767	47.683	47.228	46.500	46.370	46.100	45.615	46.682	47.605	48.539	49.188	49.383	48.004	48.978	50.094	50.487	50.291	50.835	49.786	47.398	45.810	44.489		
HORIZONTAL ALIGNMENT	L 75.00 A 150.00 R 300.00 L 75.00 A 150.00 L 80.00 A 150.00 R 250.00 L 84.44 A 150.00 L 80.00 A 150.00																																												
VERTICAL ALIGNMENT	L 57.339m Slip 1.454% L 102.319m Slip 0.000% L 83.128m Slip 4.020% L 59.740m Slip -1.617% L 135.572m Slip 2.149% L 79.684m Slip -4.153%																																												
SUPERELEVATION (e %)	7.0% 7.0%																																												
CHAINAGE (KM)	72+000	72+025	72+050	72+075	72+100	72+125	72+150	72+175	72+200	72+225	72+250	72+275	72+300	72+325	72+350	72+375	72+400	72+425	72+450	72+475	72+500	72+525	72+550	72+575	72+600	72+625	72+650	72+675	72+700	72+725	72+750	72+775	72+800	72+825	72+850	72+875	72+900	72+925	72+950	72+975	72+1000	72+1025	73+050		

SCALE: HOR - 1:2000 VER - 1:200 CLIENT: Public Works Department Government of Tripura National Highways & Infrastructure Development Corporation Ltd.		PLAN & PROFILE Km 72+000 to Km 73+000		CONSULTANT: CE TESTING COMPANY PVT. LTD. 124-A, N.S.C. Bose Road Kolkata - 700092.		Dwg. No. CET/2015/3580/NH-208/FDPR/PP Revision Mkd. - R0 Sheet No. - 10 of 13	
PROJECT: Consultancy Services for Preparation of Feasibility Study and DPR for Improvement and Widening to Two Lane with 1.5m Paved Shoulder of Newly Declared NH-208 (Length 157.70 Km) for Execution on EPC Mode in the State of Tripura under NH(O)		ROAD NAME: Kailashahar to Teliamura Section of NH-208 Package:-IV (Km 63+700 to Km 75+700)		Drawn By: M.Acharya Design By: S.Dey Checked By: S.Sadhu Approved By: B.Koner		DATE: JUNE, 2017	

PROPOSED CENTRE LINE	---
PROPOSED CARRIAGEWAY LINE	---
PROPOSED PAVED SHOULDER LINE	---
PROPOSED EARTHEN SHOULDER LINE	---
EXISTING CARRIAGEWAY	---
PROPOSED RIGHT OF WAY	---
DESIGN CHAINAGE	0+000
Survey Ch:-	0+000



FINISHED ROAD LEVEL ALONG THE PROPOSED CL.	53.529	53.751	53.979	54.207	54.436	54.664	54.892	55.120	55.349	55.577	55.805	56.033	56.262	56.490	56.718	56.946	57.174	57.402	57.630	57.858	58.086	58.314	58.542	58.770	59.000	59.228	59.456	59.684	59.912	60.140	60.368	60.596	60.824	61.052	61.280	61.508	61.736	61.964	62.192	62.420	62.648	62.876	63.104	63.332	63.560	63.788	64.016	64.244	64.472	64.700	64.928	65.156	65.384	65.612	65.840	66.068	66.296	66.524	66.752	66.980	67.208	67.436	67.664	67.892	68.120	68.348	68.576	68.804	69.032	69.260	69.488	69.716	69.944	70.172	70.400	70.628	70.856	71.084	71.312	71.540	71.768	71.996	72.224	72.452	72.680	72.908	73.136	73.364	73.592	73.820	74.048	74.276	74.504	74.732	74.960	75.188	75.416	75.644	75.872	76.100	76.328	76.556	76.784	77.012	77.240	77.468	77.696	77.924	78.152	78.380	78.608	78.836	79.064	79.292	79.520	79.748	79.976	80.204	80.432	80.660	80.888	81.116	81.344	81.572	81.800	82.028	82.256	82.484	82.712	82.940	83.168	83.396	83.624	83.852	84.080	84.308	84.536	84.764	84.992	85.220	85.448	85.676	85.904	86.132	86.360	86.588	86.816	87.044	87.272	87.500	87.728	87.956	88.184	88.412	88.640	88.868	89.096	89.324	89.552	89.780	90.008	90.236	90.464	90.692	90.920	91.148	91.376	91.604	91.832	92.060	92.288	92.516	92.744	92.972	93.200	93.428	93.656	93.884	94.112	94.340	94.568	94.796	95.024	95.252	95.480	95.708	95.936	96.164	96.392	96.620	96.848	97.076	97.304	97.532	97.760	97.988	98.216	98.444	98.672	98.900	99.128	99.356	99.584	99.812	100.040	100.268	100.496	100.724	100.952	101.180	101.408	101.636	101.864	102.092	102.320	102.548	102.776	103.004	103.232	103.460	103.688	103.916	104.144	104.372	104.600	104.828	105.056	105.284	105.512	105.740	105.968	106.196	106.424	106.652	106.880	107.108	107.336	107.564	107.792	108.020	108.248	108.476	108.704	108.932	109.160	109.388	109.616	109.844	110.072	110.300	110.528	110.756	110.984	111.212	111.440	111.668	111.896	112.124	112.352	112.580	112.808	113.036	113.264	113.492	113.720	113.948	114.176	114.404	114.632	114.860	115.088	115.316	115.544	115.772	116.000	116.228	116.456	116.684	116.912	117.140	117.368	117.596	117.824	118.052	118.280	118.508	118.736	118.964	119.192	119.420	119.648	119.876	120.104	120.332	120.560	120.788	121.016	121.244	121.472	121.700	121.928	122.156	122.384	122.612	122.840	123.068	123.296	123.524	123.752	123.980	124.208	124.436	124.664	124.892	125.120	125.348	125.576	125.804	126.032	126.260	126.488	126.716	126.944	127.172	127.400	127.628	127.856	128.084	128.312	128.540	128.768	128.996	129.224	129.452	129.680	129.908	130.136	130.364	130.592	130.820	131.048	131.276	131.504	131.732	131.960	132.188	132.416	132.644	132.872	133.100	133.328	133.556	133.784	134.012	134.240	134.468	134.696	134.924	135.152	135.380	135.608	135.836	136.064	136.292	136.520	136.748	136.976	137.204	137.432	137.660	137.888	138.116	138.344	138.572	138.800	139.028	139.256	139.484	139.712	139.940	140.168	140.396	140.624	140.852	141.080	141.308	141.536	141.764	141.992	142.220	142.448	142.676	142.904	143.132	143.360	143.588	143.816	144.044	144.272	144.500	144.728	144.956	145.184	145.412	145.640	145.868	146.096	146.324	146.552	146.780	147.008	147.236	147.464	147.692	147.920	148.148	148.376	148.604	148.832	149.060	149.288	149.516	149.744	149.972	150.200	150.428	150.656	150.884	151.112	151.340	151.568	151.796	152.024	152.252	152.480	152.708	152.936	153.164	153.392	153.620	153.848	154.076	154.304	154.532	154.760	154.988	155.216	155.444	155.672	155.900	156.128	156.356	156.584	156.812	157.040	157.268	157.496	157.724	157.952	158.180	158.408	158.636	158.864	159.092	159.320	159.548	159.776	160.004	160.232	160.460	160.688	160.916	161.144	161.372	161.600	161.828	162.056	162.284	162.512	162.740	162.968	163.196	163.424	163.652	163.880	164.108	164.336	164.564	164.792	165.020	165.248	165.476	165.704	165.932	166.160	166.388	166.616	166.844	167.072	167.300	167.528	167.756	167.984	168.212	168.440	168.668	168.896	169.124	169.352	169.580	169.808	170.036	170.264	170.492	170.720	170.948	171.176	171.404	171.632	171.860	172.088	172.316	172.544	172.772	173.000	173.228	173.456	173.684	173.912	174.140	174.368	174.596	174.824	175.052	175.280	175.508	175.736	175.964	176.192	176.420	176.648	176.876	177.104	177.332	177.560	177.788	178.016	178.244	178.472	178.700	178.928	179.156	179.384	179.612	179.840	180.068	180.296	180.524	180.752	180.980	181.208	181.436	181.664	181.892	182.120	182.348	182.576	182.804	183.032	183.260	183.488	183.716	183.944	184.172	184.400	184.628	184.856	185.084	185.312	185.540	185.768	185.996	186.224	186.452	186.680	186.908	187.136	187.364	187.592	187.820	188.048	188.276	188.504	188.732	188.960	189.188	189.416	189.644	189.872	190.100	190.328	190.556	190.784	191.012	191.240	191.468	191.696	191.924	192.152	192.380	192.608	192.836	193.064	193.292	193.520	193.748	193.976	194.204	194.432	194.660	194.888	195.116	195.344	195.572	195.800	196.028	196.256	196.484	196.712	196.940	197.168	197.396	197.624	197.852	198.080	198.308	198.536	198.764	198.992	199.220	199.448	199.676	199.904	200.132	200.360	200.588	200.816	201.044	201.272	201.500	201.728	201.956	202.184	202.412	202.640	202.868	203.096	203.324	203.552	203.780	204.008	204.236	204.464	204.692	204.920	205.148	205.376	205.604	205.832	206.060	206.288	206.516	206.744	206.972	207.200	207.428	207.656	207.884	208.112	208.340	208.568	208.796	209.024	209.252	209.480	209.708	209.936	210.164	210.392	210.620	210.848	211.076	211.304	211.532	211.760	211.988	212.216	212.444	212.672	212.900	213.128	213.356	213.584	213.812	214.040	214.268	214.496	214.724	214.952	215.180	215.408	215.636	215.864	216.092	216.320	216.548	216.776	217.004	217.232	217.460	217.688	217.916	218.144	218.372	218.600	218.828	219.056	219.284	219.512	219.740	219.968	220.196	220.424	220.652	220.880	221.108	221.336	221.564	221.792	222.020	222.248	222.476	222.704	222.932	223.160	223.388	223.616	223.844	224.072	224.300	224.528	224.756	224.984	225.212	225.440	225.668	225.896	226.124	226.352	226.580	226.808	227.036	227.264	227.492	227.720	227.948	228.176	228.404	228.632	228.860	229.088	229.316	229.544	229.772	230.000	230.228	230.456	230.684	230.912	231.140	231.368	231.596	231.824	232.052	232.280	232.508	232.736	232.964	233.192	233.420	233.648	233.876	234.104	234.332	234.560	234.788	235.016	235.244	235.472	235.700	235.928	236.156	236.384	236.612	236.840	237.068	237.296	237.524	237.752	237.980	238.208	238.436	238.664	238.892	239.120	239.348	239.576	239.804	240.032	240.260	240.488	240.716	240.944	241.172	241.400	241.628	241.856	242.084	242.312	242.540	242.768	242.996	243.224	243.452	243.680	243.908	244.136	244.364	244.592	244.820	245.048	245.276	245.504	245.732	245.960	246.188	246.416	246.644	246.872	247.100	247.328	247.556	247.784	248.012	248.240	248.468	248.696	248.924	249.152	249.380	249.608	249.836	250.064	250.292	250.520	250.748	250.976	251.204	251.432	251.660	251.888	252.116	252.344	252.572	252.800	253.028	253.256	253.484	253.712	253.940	254.168	254.396	254.624	254.852	255.080	255.308	255.536	255.764	255.992	256.220	256.448	256.676	256.904	257.132	257.360	257.588	257.816	258.044	258.272	258.500	258.728	258.956	259.184	259.412	259.640	259.868	260.096	260.324	260.552	260.780	261.008	261.236	261.464	261.692	261.920	262.148	262.376	262.604	262.832	263.060	263.288	263.516	263.744	263.972	264.200	264.428	264.656	264.884	265.112	265.340	265.568	265.796	266.024	266.252	266.480	266.708	266.936	267.164	267.392	267.620	267.848	268.076	268.304	268.532	268.760	268.988	269.216	269.444	269.672	269.900	270.128	270.356	270.584	270.812	271.040	271.268	271.496	271.724	271.952	272.180	272.408	272.636	272.864	273.092	273.320	273.548	273.776	274.004	274.232	274.4
--	--------	--------	--------	--------	--------	--------	--------	--------	--------	--------	--------	--------	--------	--------	--------	--------	--------	--------	--------	--------	--------	--------	--------	--------	--------	--------	--------	--------	--------	--------	--------	--------	--------	--------	--------	--------	--------	--------	--------	--------	--------	--------	--------	--------	--------	--------	--------	--------	--------	--------	--------	--------	--------	--------	--------	--------	--------	--------	--------	--------	--------	--------	--------	--------	--------	--------	--------	--------	--------	--------	--------	--------	--------	--------	--------	--------	--------	--------	--------	--------	--------	--------	--------	--------	--------	--------	--------	--------	--------	--------	--------	--------	--------	--------	--------	--------	--------	--------	--------	--------	--------	--------	--------	--------	--------	--------	--------	--------	--------	--------	--------	--------	--------	--------	--------	--------	--------	--------	--------	--------	--------	--------	--------	--------	--------	--------	--------	--------	--------	--------	--------	--------	--------	--------	--------	--------	--------	--------	--------	--------	--------	--------	--------	--------	--------	--------	--------	--------	--------	--------	--------	--------	--------	--------	--------	--------	--------	--------	--------	--------	--------	--------	--------	--------	--------	--------	--------	--------	--------	--------	--------	--------	--------	--------	--------	--------	--------	--------	--------	--------	--------	--------	--------	--------	--------	--------	--------	--------	--------	--------	--------	--------	--------	--------	--------	--------	--------	--------	--------	--------	--------	--------	--------	--------	---------	---------	---------	---------	---------	---------	---------	---------	---------	---------	---------	---------	---------	---------	---------	---------	---------	---------	---------	---------	---------	---------	---------	---------	---------	---------	---------	---------	---------	---------	---------	---------	---------	---------	---------	---------	---------	---------	---------	---------	---------	---------	---------	---------	---------	---------	---------	---------	---------	---------	---------	---------	---------	---------	---------	---------	---------	---------	---------	---------	---------	---------	---------	---------	---------	---------	---------	---------	---------	---------	---------	---------	---------	---------	---------	---------	---------	---------	---------	---------	---------	---------	---------	---------	---------	---------	---------	---------	---------	---------	---------	---------	---------	---------	---------	---------	---------	---------	---------	---------	---------	---------	---------	---------	---------	---------	---------	---------	---------	---------	---------	---------	---------	---------	---------	---------	---------	---------	---------	---------	---------	---------	---------	---------	---------	---------	---------	---------	---------	---------	---------	---------	---------	---------	---------	---------	---------	---------	---------	---------	---------	---------	---------	---------	---------	---------	---------	---------	---------	---------	---------	---------	---------	---------	---------	---------	---------	---------	---------	---------	---------	---------	---------	---------	---------	---------	---------	---------	---------	---------	---------	---------	---------	---------	---------	---------	---------	---------	---------	---------	---------	---------	---------	---------	---------	---------	---------	---------	---------	---------	---------	---------	---------	---------	---------	---------	---------	---------	---------	---------	---------	---------	---------	---------	---------	---------	---------	---------	---------	---------	---------	---------	---------	---------	---------	---------	---------	---------	---------	---------	---------	---------	---------	---------	---------	---------	---------	---------	---------	---------	---------	---------	---------	---------	---------	---------	---------	---------	---------	---------	---------	---------	---------	---------	---------	---------	---------	---------	---------	---------	---------	---------	---------	---------	---------	---------	---------	---------	---------	---------	---------	---------	---------	---------	---------	---------	---------	---------	---------	---------	---------	---------	---------	---------	---------	---------	---------	---------	---------	---------	---------	---------	---------	---------	---------	---------	---------	---------	---------	---------	---------	---------	---------	---------	---------	---------	---------	---------	---------	---------	---------	---------	---------	---------	---------	---------	---------	---------	---------	---------	---------	---------	---------	---------	---------	---------	---------	---------	---------	---------	---------	---------	---------	---------	---------	---------	---------	---------	---------	---------	---------	---------	---------	---------	---------	---------	---------	---------	---------	---------	---------	---------	---------	---------	---------	---------	---------	---------	---------	---------	---------	---------	---------	---------	---------	---------	---------	---------	---------	---------	---------	---------	---------	---------	---------	---------	---------	---------	---------	---------	---------	---------	---------	---------	---------	---------	---------	---------	---------	---------	---------	---------	---------	---------	---------	---------	---------	---------	---------	---------	---------	---------	---------	---------	---------	---------	---------	---------	---------	---------	---------	---------	---------	---------	---------	---------	---------	---------	---------	---------	---------	---------	---------	---------	---------	---------	---------	---------	---------	---------	---------	---------	---------	---------	---------	---------	---------	---------	---------	---------	---------	---------	---------	---------	---------	---------	---------	---------	---------	---------	---------	---------	---------	---------	---------	---------	---------	---------	---------	---------	---------	---------	---------	---------	---------	---------	---------	---------	---------	---------	---------	---------	---------	---------	---------	---------	---------	---------	---------	---------	---------	---------	---------	---------	---------	---------	---------	---------	---------	---------	---------	---------	---------	---------	---------	---------	---------	---------	---------	---------	---------	---------	---------	---------	---------	---------	---------	---------	---------	---------	---------	---------	---------	---------	---------	---------	---------	---------	---------	---------	---------	---------	---------	---------	---------	---------	---------	---------	---------	---------	---------	---------	---------	---------	---------	---------	---------	---------	---------	---------	---------	---------	---------	---------	---------	---------	---------	---------	---------	---------	---------	---------	---------	---------	---------	---------	---------	---------	---------	---------	---------	---------	---------	---------	---------	---------	---------	---------	---------	---------	---------	---------	---------	---------	---------	---------	---------	---------	---------	---------	---------	---------	---------	---------	---------	---------	---------	---------	---------	---------	---------	---------	---------	---------	---------	---------	---------	---------	---------	---------	---------	---------	---------	---------	---------	---------	---------	---------	---------	---------	---------	---------	---------	---------	---------	---------	---------	---------	---------	---------	---------	---------	---------	---------	---------	---------	---------	---------	---------	---------	---------	---------	---------	---------	---------	---------	---------	---------	---------	---------	---------	---------	---------	---------	---------	---------	---------	---------	---------	---------	---------	---------	---------	---------	---------	---------	---------	---------	---------	---------	---------	---------	---------	---------	---------	---------	---------	---------	---------	---------	---------	---------	---------	---------	---------	---------	---------	---------	---------	---------	---------	---------	---------	---------	---------	---------	---------	---------	---------	---------	---------	---------	---------	---------	---------	---------	---------	---------	---------	---------	---------	---------	---------	---------	---------	---------	---------	---------	---------	---------	---------	---------	---------	---------	---------	---------	---------	---------	---------	---------	---------	---------	---------	---------	---------	---------	---------	---------	---------	---------	---------	---------	---------	---------	---------	---------	---------	---------	---------	---------	---------	---------	---------	---------	---------	---------	---------	---------	---------	---------	---------	---------	---------	---------	---------	---------	---------	---------	---------	---------	---------	---------	---------	---------	---------	---------	---------	---------	---------	---------	---------	---------	---------	---------	---------	-------